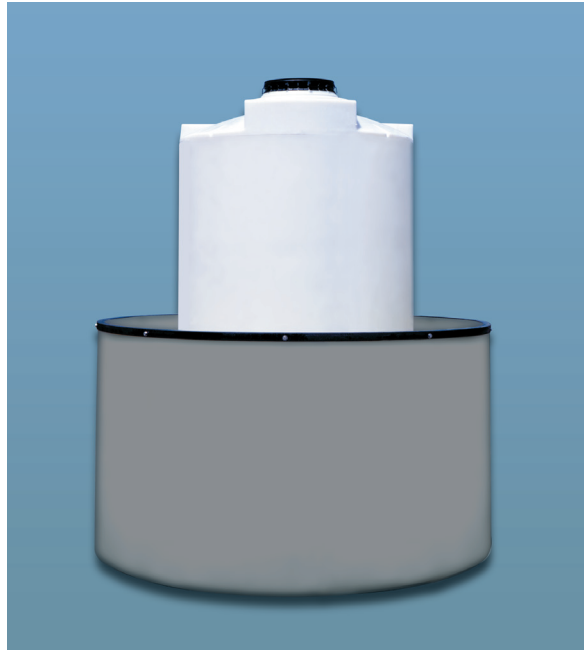


## Cylindrical Secondary Containment Basins

These cylindrical containment tanks (IRD) are available in either virgin high density crosslink or medium density FDA-compliant linear polyethylene. A 2"×2"×3/16" angle iron top support ring is optional and can be ordered separately. Epoxy painted mild steel or 316 stainless steel rings are available. Basins meet or exceed EPA standards. Local regulations should be checked to assure compliance.



Model Number	Capacity (US Gallons)	Diameter (inches)		Contains Tank Max. Diameter (inches)
		Diameter	Cut Height	
IRD 550	up to 690	60	0 to 58	48
IRD 1050	up to 1200	72	58 to 72	64
IRD 1550	1200 - 1800	72	72 to 108	64
IRD 2300	1800 - 2300	72	108 to 135	64
IRD 1100	up to 982	86	0 to 40	82
IRD 150A	982 to 1301	86	40 to 53	82
IRD 2000	1301 to 1891	86	53 to 77	82
IRD 2500	1891 to 2406	86	77 to 98	82
IRD 3000	up to 2881	90	0 to 107	86
IRD 4000	2881 to 3877	90	107 to 144	86
IRD 1850	up to 1760	96	0 to 58	92
IRD 2400	1760 to 2277	96	58 to 75	92
IRD 2900	2277 to 2762	96	75 to 91	92
IRD 4100	up to 3900	119	0 to 84	115
IRD 4200	2762 to 4200	96	91 to 140	92
IRD 5600	4200 to 5300	96	140 to 177	92
IRD 5200	up to 4800	105	0 to 133	101
IRD 6500	4800 to 6200	105	133 to 172	101
IRD 5500	3900 to 5400	119	84 to 116	115
IRD 6510	5400 to 6100	119	116 to 131	115
IRD 8000	up to 7800	143	0 to 116	139
IRD 10000	7800 to 9900	143	116 to 147	139
IRD 12000	9900 to 11000	143	147 to 163	139

Model number availability and individual specifications subject to change without notice. Gallonage and weights are approximate. All wall thicknesses conform to ASTM D-1998.