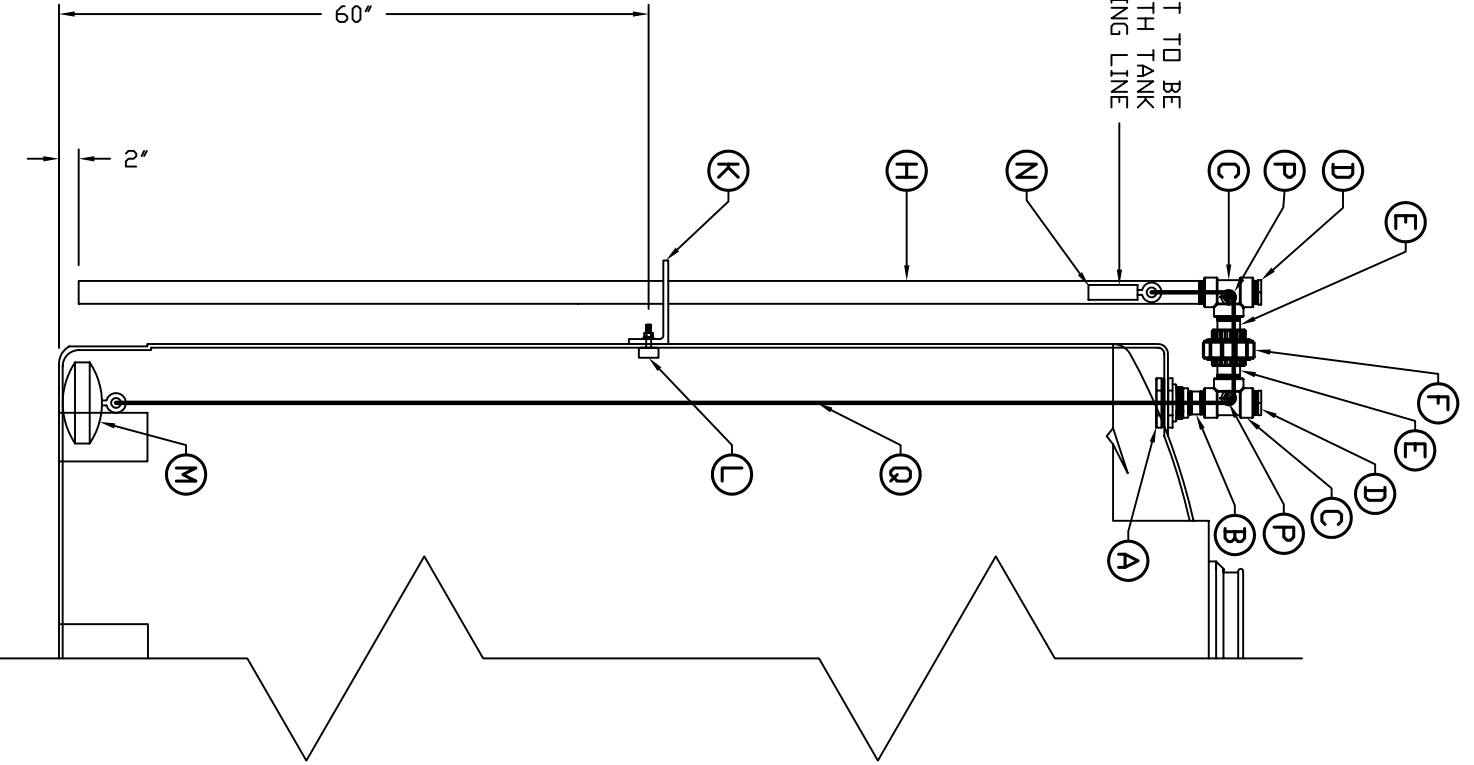



CENTER OF FLOAT TO BE
LINED UP WITH TANK
PARTING LINE



ACCESSORIES

MK	QTY	SIZE	DESCRIPTION
A	1	2"	PVC BULKHEAD FITTING WITH GASKET
B	1	2"	PVC THREADED CLOSE NIPPLE
C	2	2"	PVC THREADED TEE
D	2	2"	PVC THREADED PIPE PLUG
E	2	2"	PVC THREADED PIPE NIPPLE (AS REQUIRED)
F	1	2"	PVC SOCKET UNION
H	1	2"	CLEAR BUSADA 200 PIPE, THREADED ONE END
K	2	-	POLYETHYLENE PIPE SUPPORT BRACKET (SEE RFL_ASM DWG)
L	2	-	ENCAPSULATED DONKER BOLTS
M	1	-	POLYETHYLENE INTERIOR FLOAT (SEE RFL_ASM DWG.)
N	1	-	PVC EXTERIOR COUNTER WEIGHT (SEE RFL_ASM DWG.)
P	2	-	FABRICATED PVC ROLLER / INSTALLED W/ PE ROD
Q	-	-	1/8" DIA. POLYPROPYLENE ROPE

REV	REVISION DESCRIPTION	REV DATE
A	CHANGED TUBING FROM PVC TO BUSADA (EFFECTIVE 5/29/08), DELETED ITEM (G) (MALE THRED X COUPLER) AT TOP, DELETED ITEM (J) (FEMALE COUPLER) JOINT CONNECTION	3/24/09 SR


 300 N TAYLOR ROAD
 GARRETT, IN 46738
 PHONE: (260) 357-3181
 FAX: (260) 357-3738
 BRANNEN, JR.
 S RHWLLISON
 DRAWN DATE:
 3-2-04

TITLE REVERSE FLOAT LEVEL INDICATOR
 FOR VERTICAL STORAGE TANKS
 DWG NUMBER: RFL-3-31-04
 REV: A